



ignite change

1. Introduction:

The inner city of Pretoria is a fast growing and densely populated area. Hundreds of people flock from rural areas and countries north of the South African border to Tshwane, with the dream of setting up a better life than they are used to. Sadly, reality is met when they end up in the inner city, sharing a small one room flat with ten or more people where there are limited opportunities and more than often a shortage of food and income. In circumstances like these family structures fall apart, moral standards drop and crime and gangsterism sometimes becomes a way of life. Amidst all the hardship it is very often the women and children who suffer the most. Fathers, time and time again, leave in search of a better life and mothers are left to care for the children on their own, mostly with devastating consequences. Mothers, and/or their children, fall prey to drug lords, prostitution or people with other criminal intent (often victims of abuse themselves). Basic needs, like food and clothing, become luxury items and services such as quality day-care and education for children, only a dream.

It is in these circumstances that PEN works towards bettering lives of people and to offer a vision of what a city could be to its inhabitants if there was a caring and loving community at its center.

2. Our vision is to:

Ignite Change
Nurture togetherness and
Heal communities

PEN focuses on the needs of children and use this focus as an entry strategy into the marginalized communities in the broader Tshwane. We channel the focus, firstly, on enhancing quality of life of people and secondly, on providing basic needs such as food, clothing, housing, health services and psycho-social support.

3. PEN's sustainability plan:

PEN, as an organisation, is working towards self-sustaining efforts, through various business ventures as far as staff salaries and basic running costs are concerned. 50%+ of PEN's turnover is made through income generating projects (*inter alia*, rental of rooms and business premises; skills development and other small business initiatives).

Visit us at www.pen.org.za

PEN Board of Directors:

Chairperson: Mr Gerhard Ploos van Amstel | Mr Alec Dixon | Rev Francois Smit | Mr Pieter Breytenbach | Mr Eugene Lufhugu | Prof Danie Veldsman | Mr Morris Mthombeni | Dr Marinda van Niekerk | Mr Johan van Niekerk | Mr Ntabeni Bagosi | Mr Wilhelm van Niekerk | Dr Gustav Claassen

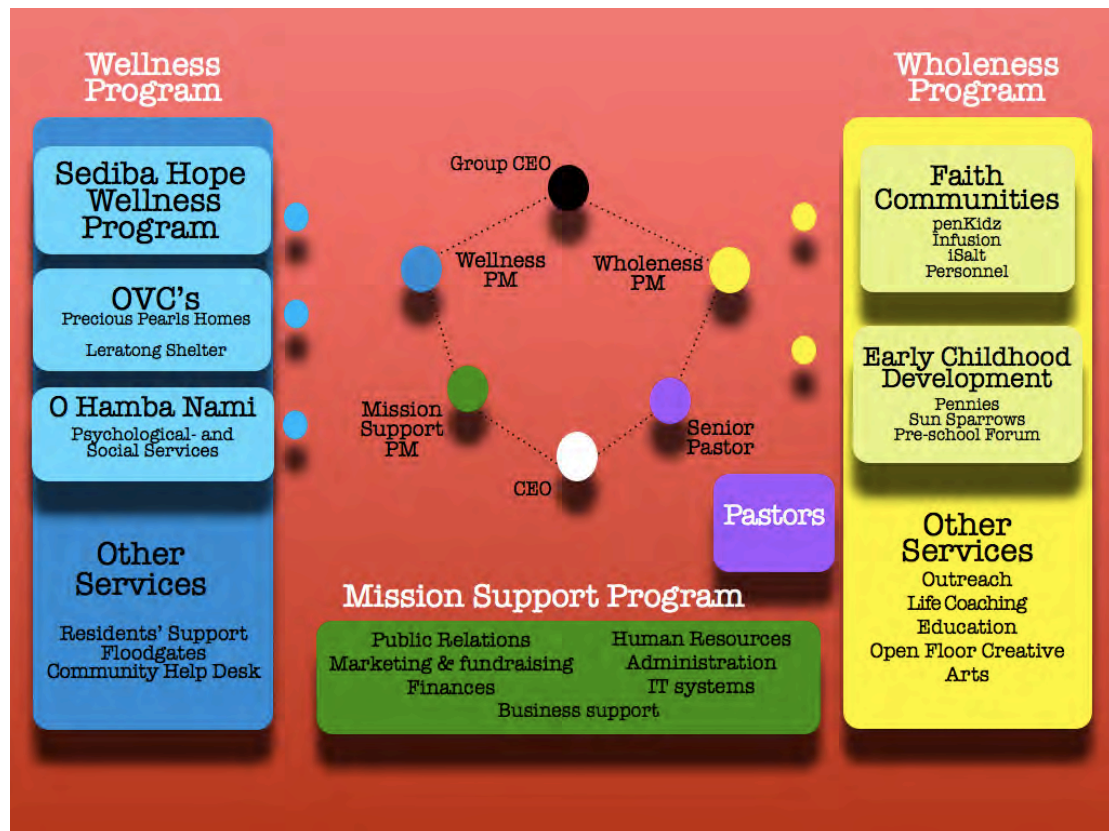
Reg. nr 9201259\08 013-087NPO | T: +27 12 323 6688 | F: +27 86 524 0733 | info@pen.org.za | PO Box 818 Pretoria 0001

The donations that PEN receives are used on the various projects, in totality, and donors receive specific account of their donation, be it financial or in-kind/material. PEN is proudly BEE compliant (rated as a level 2 contributor with a score of 88.46) and can therefore quantify and certify any contribution needed for a BEE scorecard. PEN is also in a position to present section 18A tax exemption certificates.

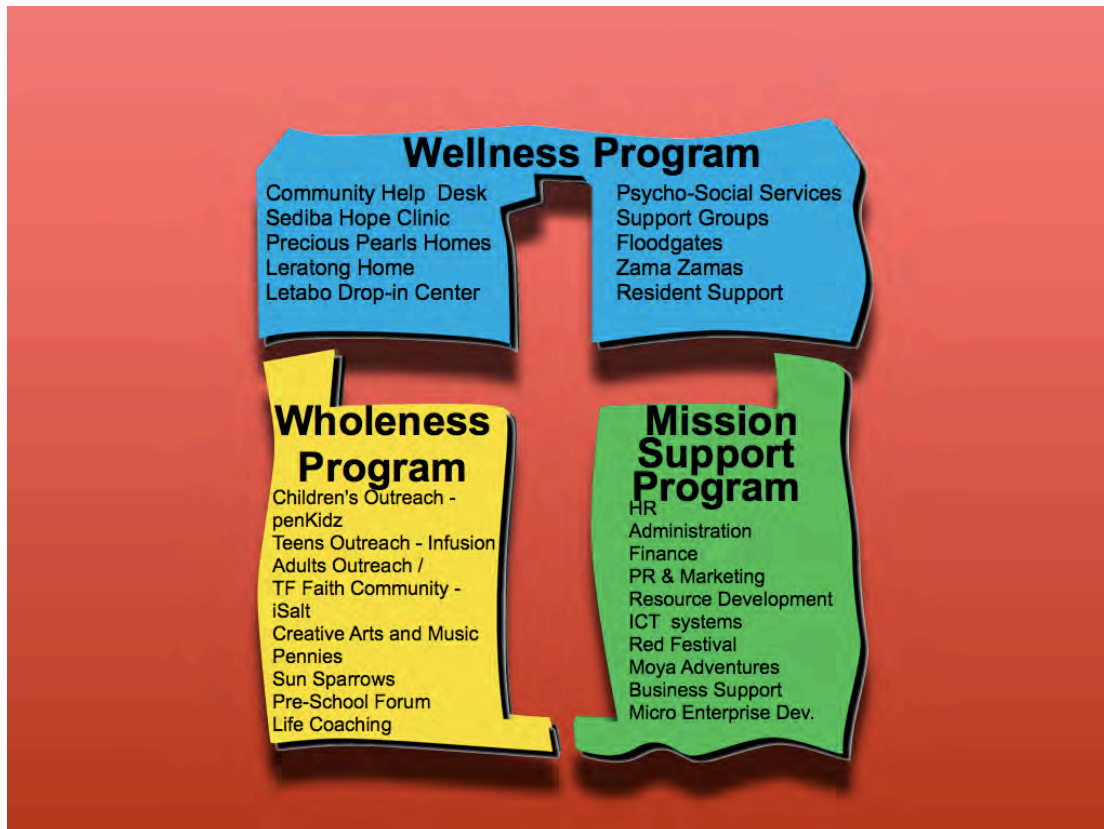
4. Statistics:

PEN employs 140 full time staff; 3 000+ children are directly impacted every week; 55 740 meals are served monthly; 850 counselling sessions take place; 2 500 people get tested for HIV monthly and 600 housing units are rented out.

5. PEN Structure:



6. Program description



6.1 Wholeness Program

This program aims at improving the quality of life of people through spiritual and cognitive support.

Faith Communities:

Kids programs – Our spiritual workers reach more or less a thousand children, through outreach programs and regular care groups, during one week. PEN workers visit selected schools on a regular basis, where both young children and teenagers are impacted. At the PEN premises, weekly Bible clubs are held for the children of *penKidz*.

Youth programs – Teenagers meet regularly in “pal groups” and are also given the opportunity to attend different camps. Any need identified during activities, receives the appropriate attention. Three hundred and fifty teenagers are regular participants in PEN youth programs. The *Infusion* youth church was recently planted with young adults and high school students attending.

Our youth have free access to educational, support initiatives in terms of academic work, career guidance and aptitude testing.

Adult programs – Four hundred students in the PEN housing programs attend iSalt cell groups and are given support where needed (mostly one-on-one), helping them to address various physical, emotional, therapeutic and material needs.

Personnel care – PEN takes care of staffs needs through regular, but varied types of, meetings and capacity building programs.

Early Childhood Development Program:

Pennies Nursery School is situated in the inner city with a hundred and sixteen learners.

Sun Sparrows Nursery School, in Sunnyside, caters for seventy-seven learners, including children from the Precious Pearls Home of Safety.

At both nursery schools, qualified staff attends to the children's educational, social, spiritual and therapeutic needs. They provide balanced meals and snacks and ensure parent involvement in the development of their children. Many parents can't afford school fees and are, as a result, dependent on bursary funds obtained by PEN.

Pre-School Forum - 17 struggling inner city nursery schools are assisted through training, resource development and other support, in order to better the quality of education and ensure proper standards are put in place.

6.2 Wellness Program

This program includes a focus on services aimed at providing in the basic needs of people:

Floodgates – The clothing store, gives needy people from the street an opportunity to receive good quality, used clothing, for free under particular circumstances, or sells it at a nominal price to the resident in surrounding areas.

Supportive Housing – PEN has a property portfolio that provides subsidised, low cost housing to community members. The residents are, in some instances, also provided with meals and afforded additional support through social, medical, spiritual and therapeutic services.

Community Centre – This centre provides basic skills training (like basic sewing and cooking) to empower students to earn a living. Assistance in "job hunting" (for example finding job opportunities, preparing a curriculum vitae, or setting up an appointment) is an added benefit. People can make use of the chapel or the tea room and have access to appointments with the pastor on duty.

Zama Zamas – PEN identified the need for a shelter for the gentlemen that roam the streets in search of recyclable items, such as paper and cardboard. The Zama Zamas have a safe, clean space with lockup facilities, in a home provided by PEN. PEN had sturdy, but light and functional trolleys designed and made for them. They have access to all the PEN services and have a weekly fellowship with a pastor.

Sediba Hope Wellness Center:

Sediba Hope Medical Centre has qualified staff that are able to treat minor illnesses, supply and monitor medication and do referrals to other facilities, for example a hospice, if needed. The clinic has a doctor on site to care for advanced medical problems.

Home based care - About 100 patients, per week, are supported in their homes or at shelters. The services include support to patients through medical care and basic actions like feeding, washing and dressing; medication monitoring, wound care and other support. Many are HIV/AIDS patients living on the street.

O Hamba Nami Center:

Social services is staffed by qualified social workers who render a wide range of services and addresses various needs; amongst other:

-Relationship counselling - Counselling for drug and/ or alcohol abuse in both adults and children; distribution of food parcels; home visits to families who cannot come to the office and running a social skills and developmental touch program.

-Psychological support - This office employs a qualified psychologist. Services rendered: trauma counselling; play therapy at the nursery schools and houses of safety; academic assessments and career counselling for high school children, and more. There is a close working relationship between the social worker and the psychologist in order to ensure a holistic service.

OVC program:

Precious Pearls Sunnyside: Our first house of safety is situated in Sunnyside with more or less twenty orphaned and/ or vulnerable children occupants.

Precious Pearls Berea: This house of safety in Berea accommodates 9 teenage girls.

Leratong Child and Youth Care Center: We recently moved the home for boys, from Mamelodi to a home in Pretoria West in order to ensure better integration with the PEN services for the 10 residing boys.

Most of the children in our homes of safety are either rescued from an abusive family situation, orphaned due to HIV/AIDS or are refugee orphans. These children are placed in the formal education system and receive the necessary therapeutic and psychological assistance. If possible, foster care and adoptions are arranged as well.

Streetwise Drop-in Center (Shoshanguve) - Children in Shoshanguve are given a safe option after school; educational assistance; food and also an opportunity to take a shower.

7. Generic information:

PEN is a faith-based Non-Profit, Sec. 21 Organisation (Reg. Nr. 92/01259/08; 013-087 NPO). Our Board of Directors (Mr Gerhardt Ploos van Amstel (Chairperson), Prof Danie Veldsman, Mr Alec Dixon, Rev Francois Smit, Mr Pieter Breytenbach, Mr Eugene Lufhugu, Mr Morris Mthombeni, Dr Marinda van Niekerk, Mr Johan van Niekerk, Mr Ndabeni Bagosi, Mr Wilhelm van Niekerk, Dr Gustav Claassen) was recently transformed to reflect the South African profile and together with our competent and dedicated Executive Management Team, ensures sound and sustainable business at PEN.

Our group CEO, Mr. Wilhelm van Niekerk also oversees the Property and Investment portfolios. Dr. Marinda van Niekerk is the CEO of the PEN Programs with the Senior pastor Rev. Francois Smit; the Wholeness Executive Manager, Rev. Sharaine Steenberg and Wellness Executive Manager, Ms. Dagmara du Plessis.

8. Finances:

PEN is financially audited by an independent auditor (CMV Accountant Inc.), as required in the Companies Act.

Contact us:

Ms Martha Venter
Resource Developer
Email: martha@pen.org.za
Cell: 083 258 7458

Dr Marinda van Niekerk
CEO
Email: marinda@pen.org.za
Cell: 083 268 9474

Our company information is available on our website, at www.pen.org.za.